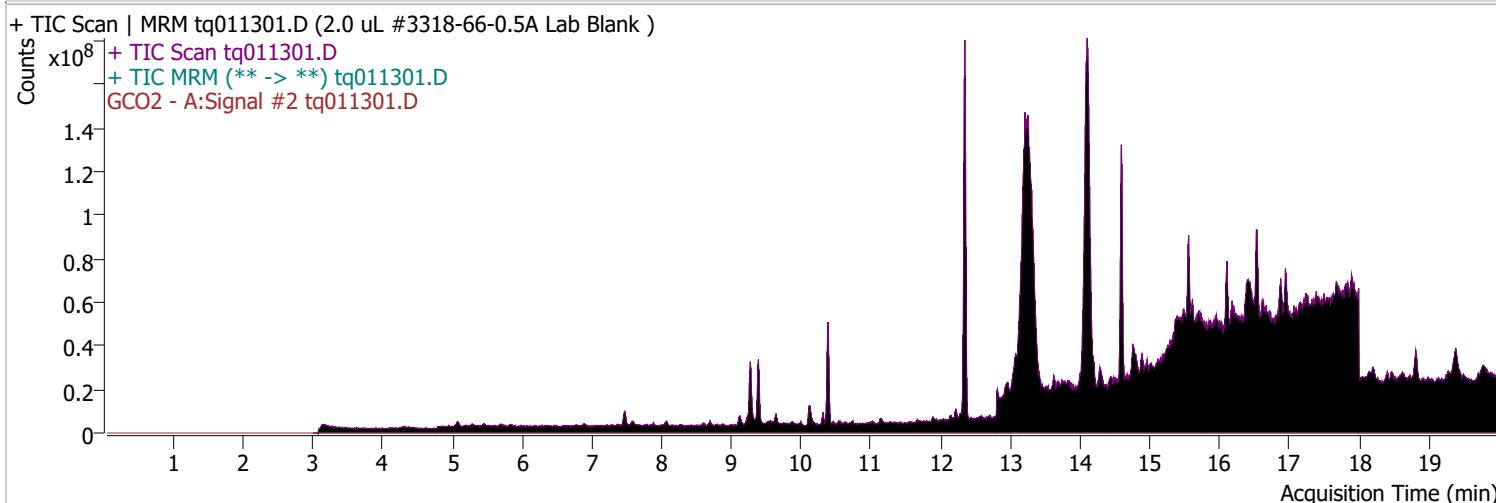
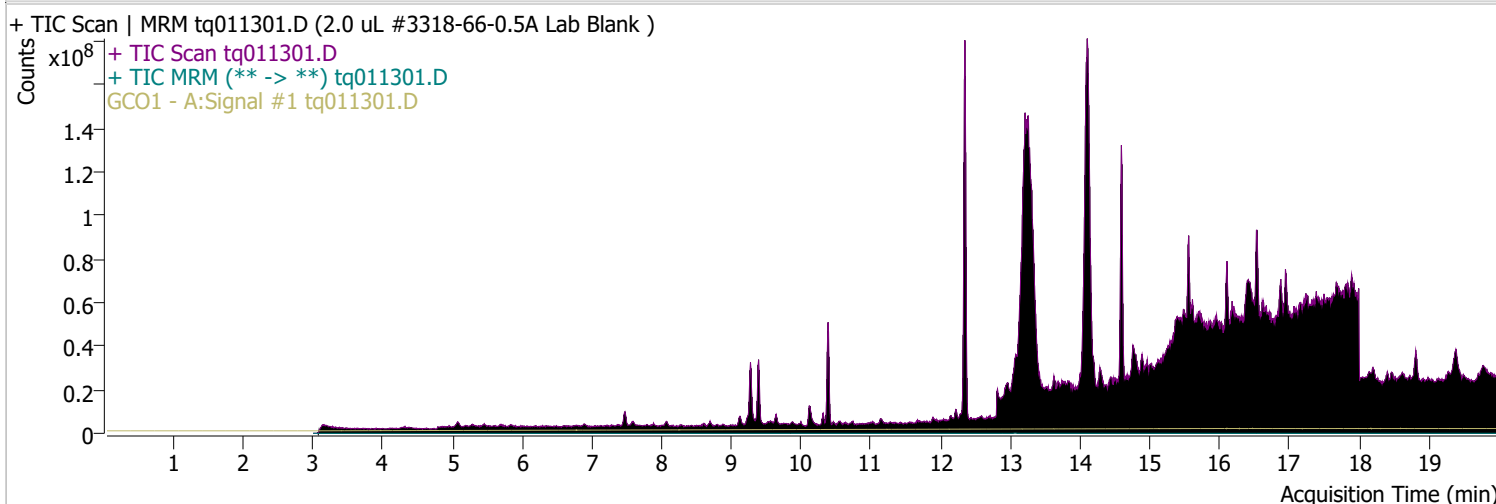
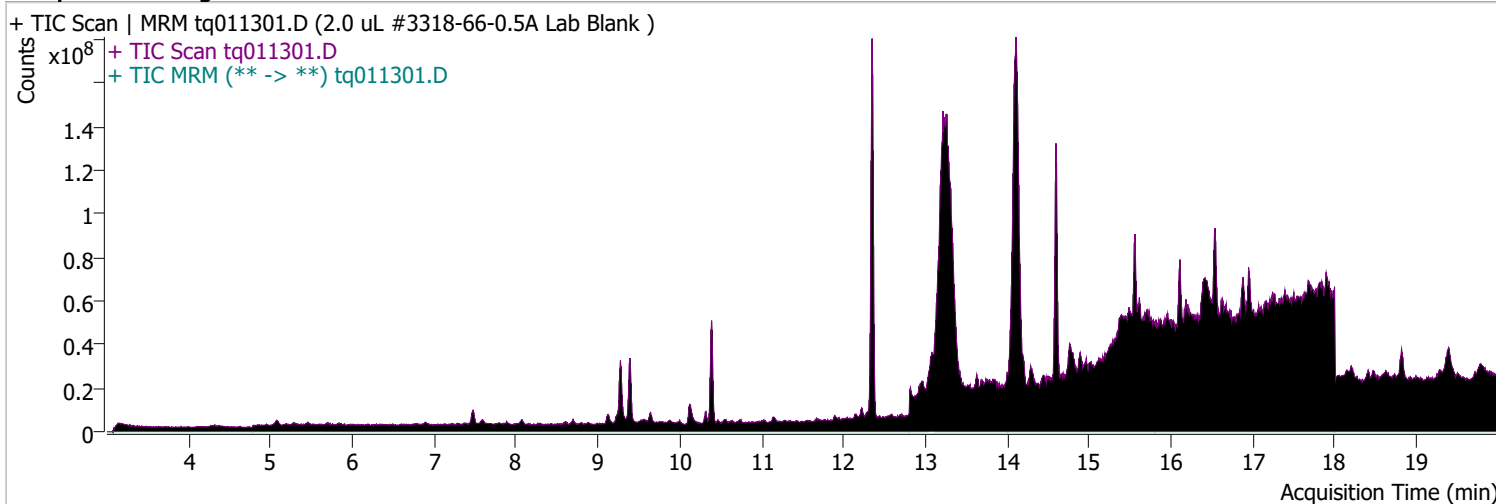


# Quantitative Analysis Sample Report

Batch Path	D:\MassHunter\GCMS\1\data\13jan23\QuantResults\13jan23.batch.bin		
Analysis Time	1/13/2023 12:01 PM	Analyst Name	TAI\us32_usr_ins22923
Report Time	1/18/2023 2:35:59 PM	Reporter Name	TAI\us32_usr_ins22923
Last Calib Update	1/3/2023 2:39 PM	Batch State	Processed
Quant Batch Version	10.1	Quant Report Version	10.1
Acq. Time	1/13/2023 9:18 AM	Data File	tq011301.D
Sample Type	Sample	Sample Name	2.0 uL #3318-66-0.5A Lab Blank
Dilution	1	Acq. Method	tq22m1227

## Sample Chromatogram

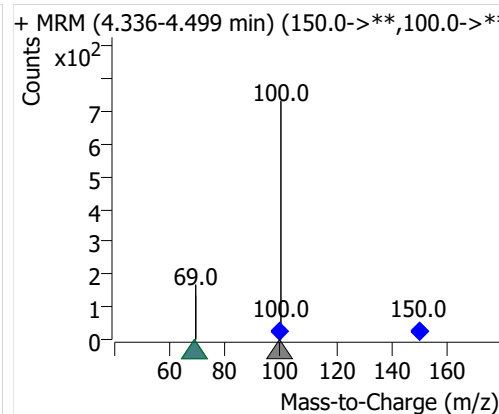
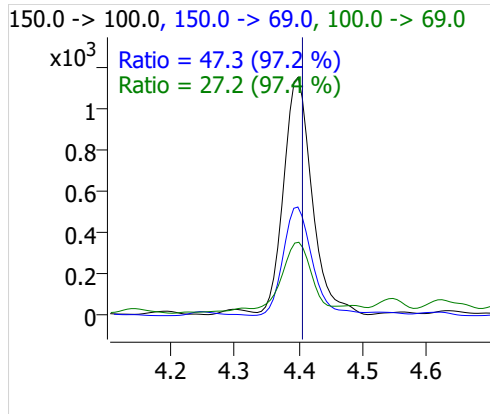
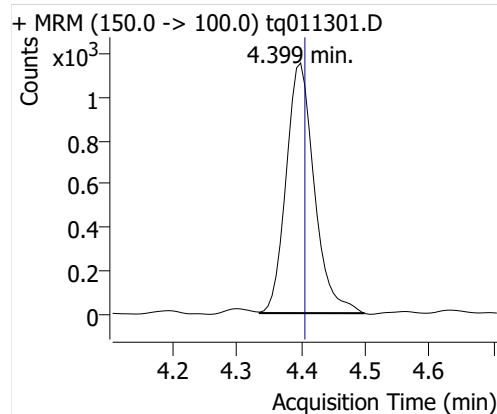


Compound	ISTD	RT	Resp.	ISTD Resp.	Resp. Ratio	Final Conc	Units
PFBA	6:2 FTOH-C13	4.399	3488	52575	0.0664	0.0198	ng

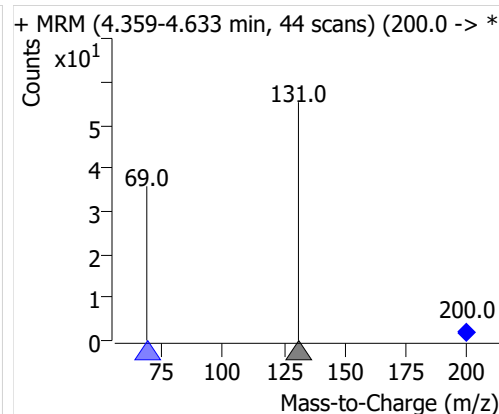
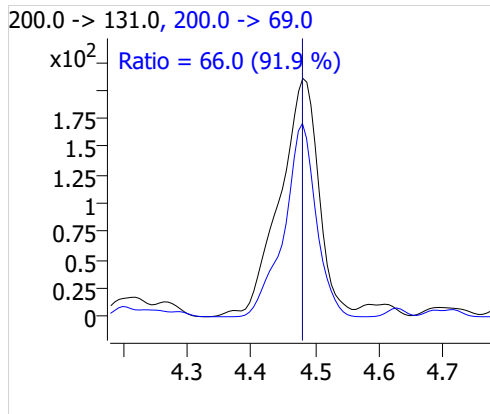
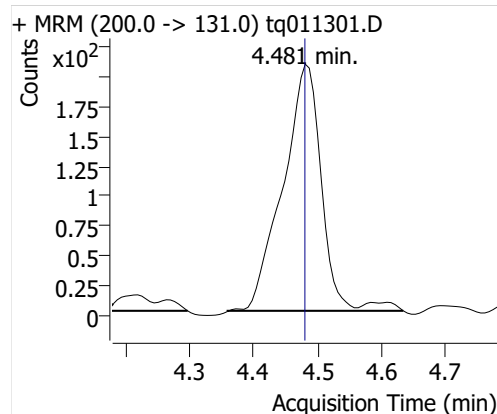
# Quantitative Analysis Sample Report

Compound	ISTD	RT	Resp.	ISTD Resp.	Resp. Ratio	Final Conc	Units
PFPeA	6:2 FTOH-C13	4.481	867	52575	0.0165	0.0055	ng
PFHxA	6:2 FTOH-C13	4.639	1236	52575	0.0235	0.0170	ng
PFHpA	6:2 FTOH-C13	4.920	180	52575	0.0034	0.0036	ng
PFOA	6:2 FTOH-C13	5.341	1117	52575	0.0213	0.0352	ng

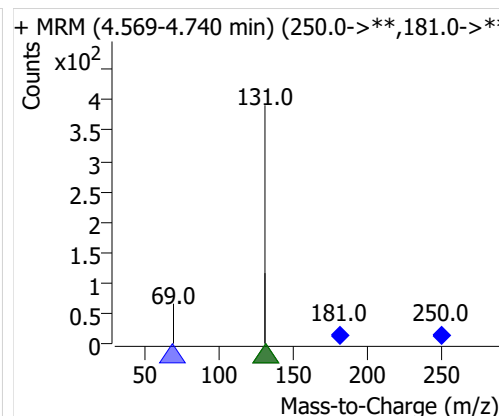
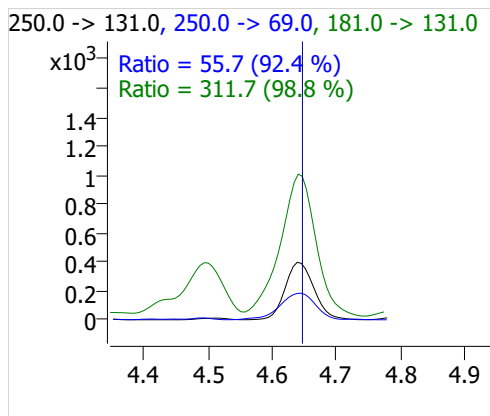
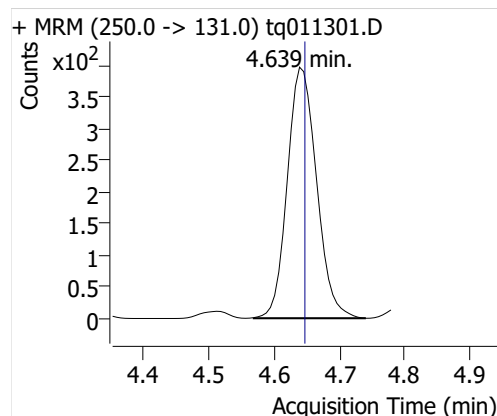
## PFBA



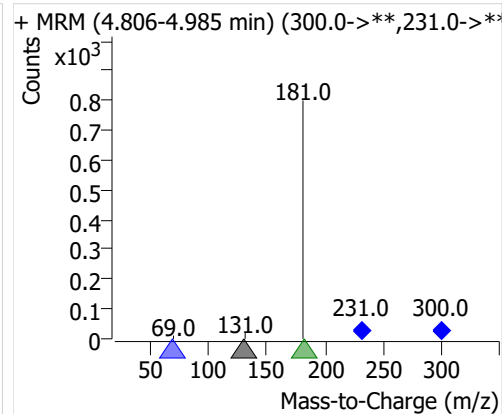
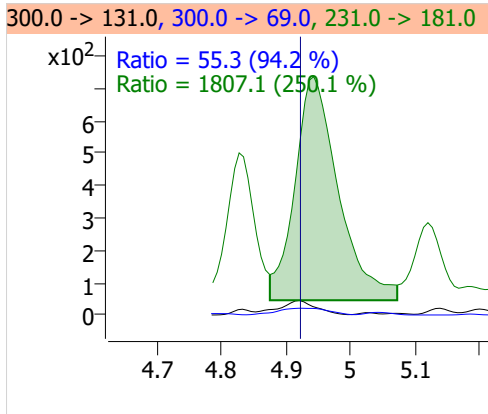
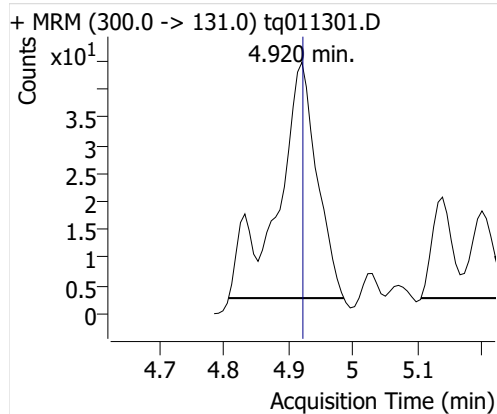
## PFPeA



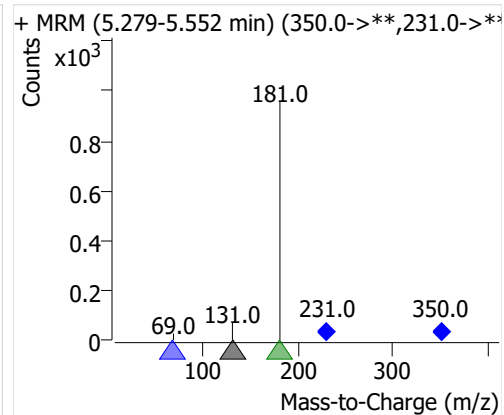
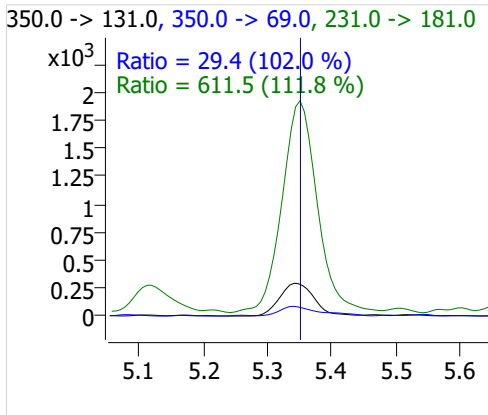
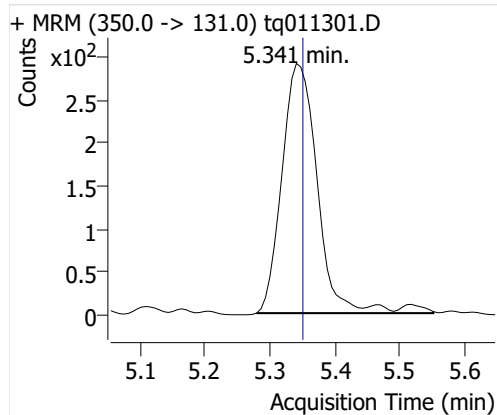
## PFHxA



## PFHpA



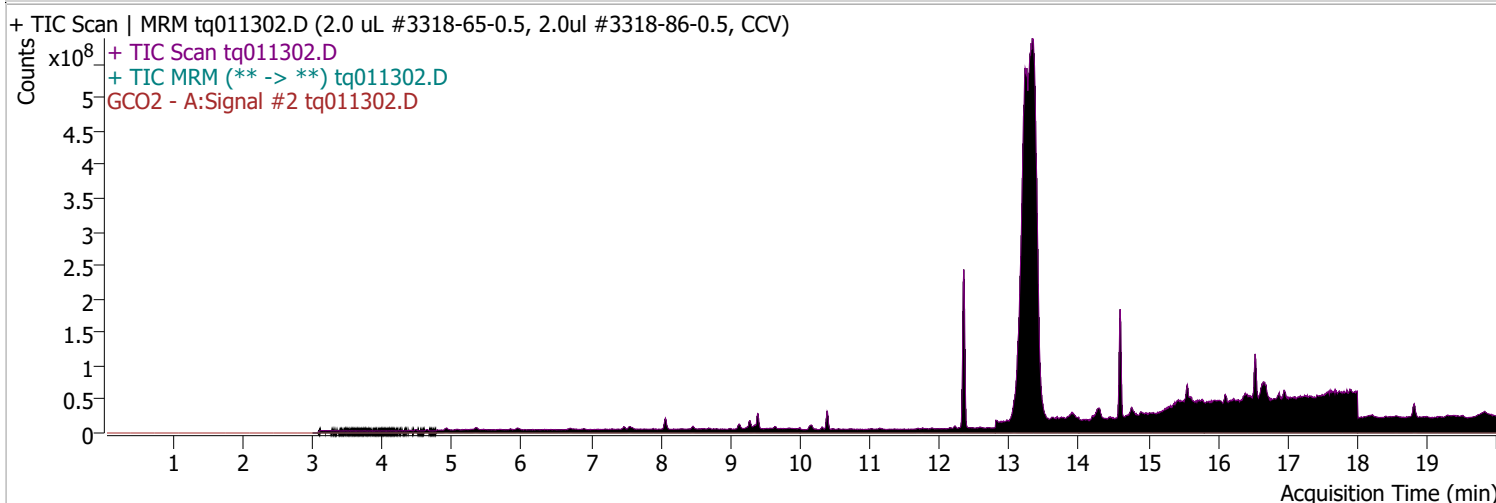
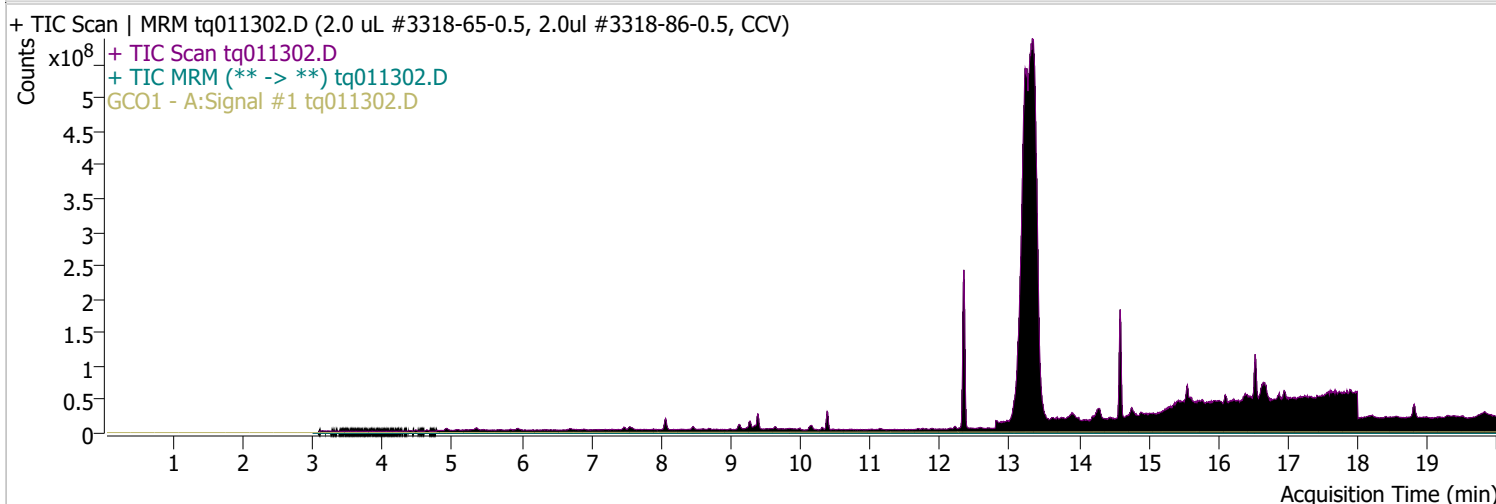
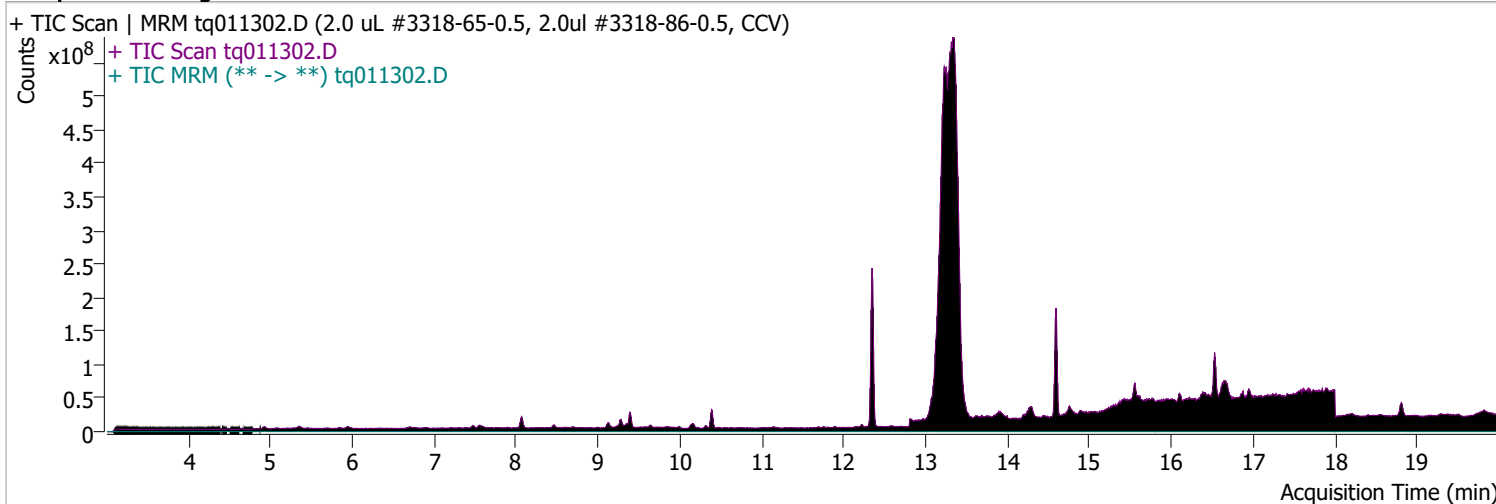
## PFOA



# Quantitative Analysis Sample Report

Batch Path	D:\MassHunter\GCMS\1\data\13jan23\QuantResults\13jan23.batch.bin		
Analysis Time	1/13/2023 12:01 PM	Analyst Name	TAI\us32_usr_ins22923
Report Time	1/18/2023 2:36:01 PM	Reporter Name	TAI\us32_usr_ins22923
Last Calib Update	1/3/2023 2:39 PM	Batch State	Processed
Quant Batch Version	10.1	Quant Report Version	10.1
Acq. Time	1/13/2023 9:41 AM	Data File	tq011302.D
Sample Type	CC	Sample Name	2.0 uL #3318-65-0.5, 2.0ul #3318-86-0.5, CCV
Dilution	1	Acq. Method	tq22m1227

## Sample Chromatogram

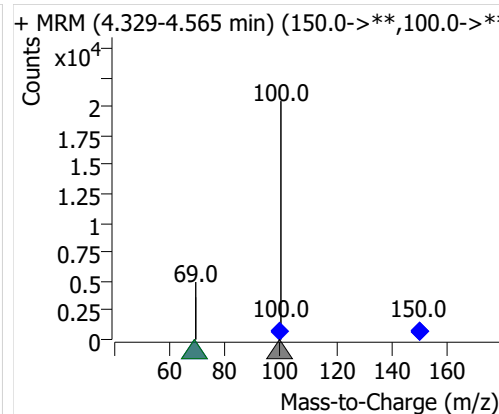
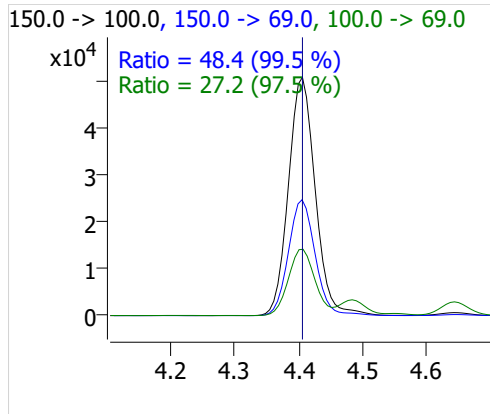
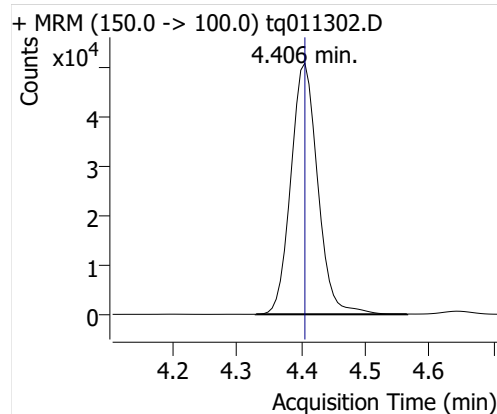


Compound	ISTD	RT	Resp.	ISTD Resp.	Resp. Ratio	Final Conc	Units
PFBA	6:2 FTOH-C13	4.406	147988	53091	2.7875	0.8318	ng

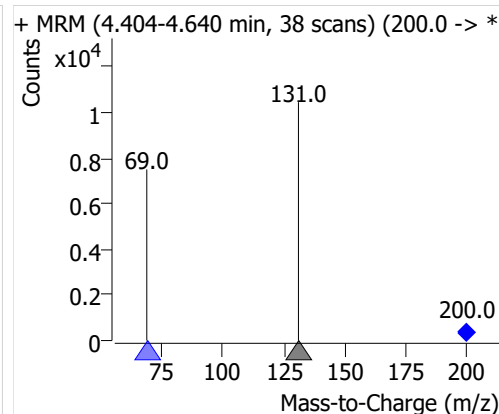
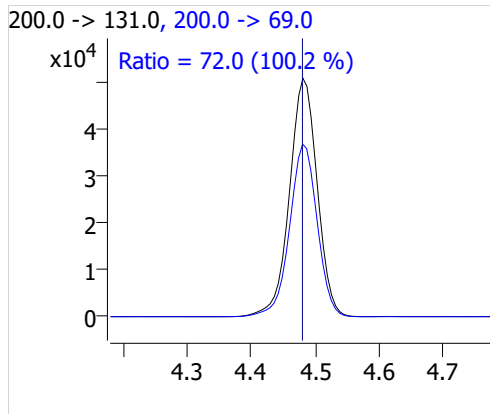
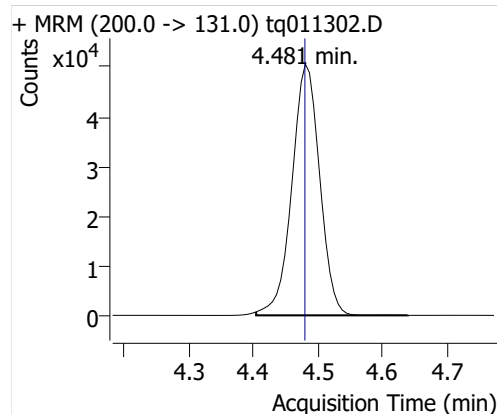
# Quantitative Analysis Sample Report

Compound	ISTD	RT	Resp.	ISTD Resp.	Resp. Ratio	Final Conc	Units
PFPeA	6:2 FTOH-C13	4.481	151549	53091	2.8545	0.9601	ng
PFHxA	6:2 FTOH-C13	4.645	71860	53091	1.3535	0.9777	ng
PFHpA	6:2 FTOH-C13	4.927	46878	53091	0.8830	0.9353	ng
PFOA	6:2 FTOH-C13	5.348	29702	53091	0.5595	0.9270	ng

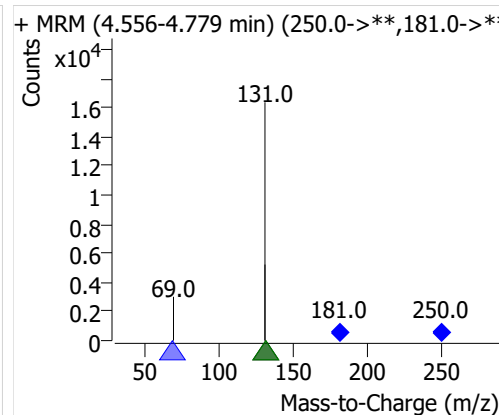
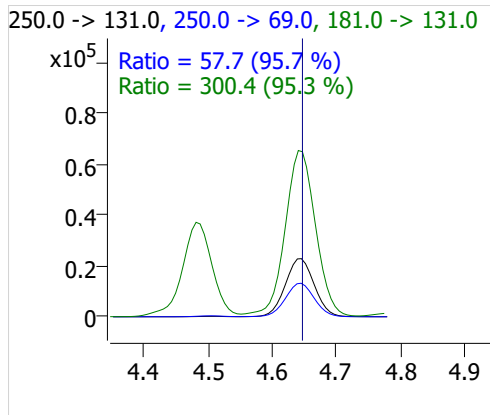
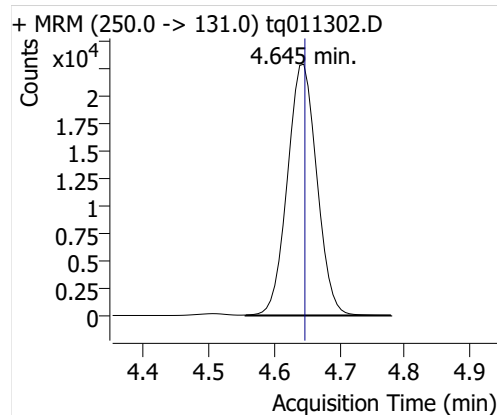
## PFBA



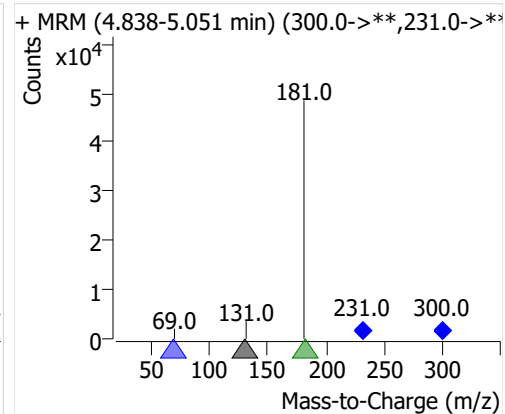
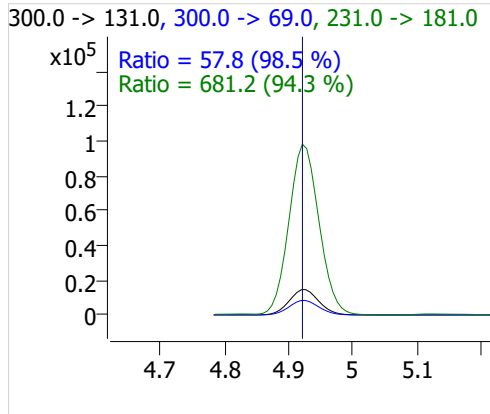
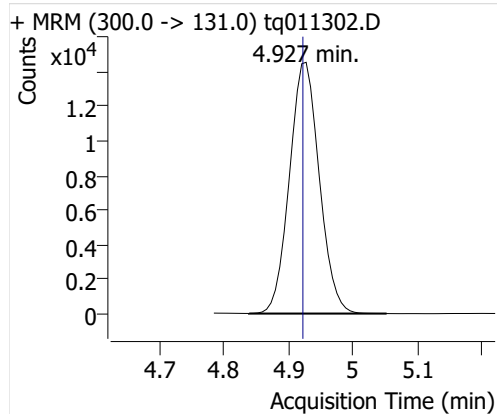
## PFPeA



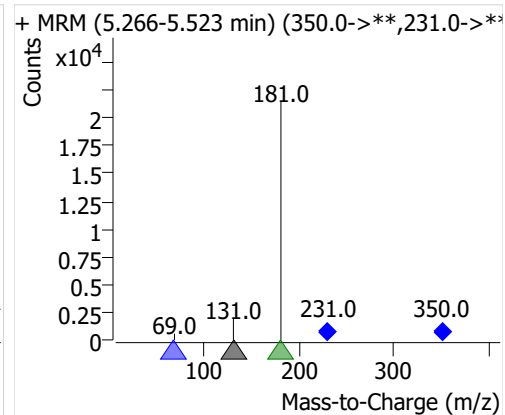
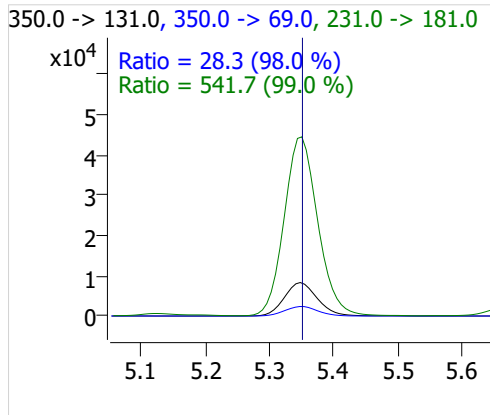
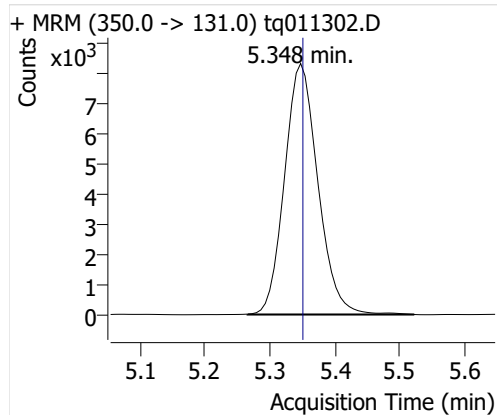
## PFHxA



## PFHpA



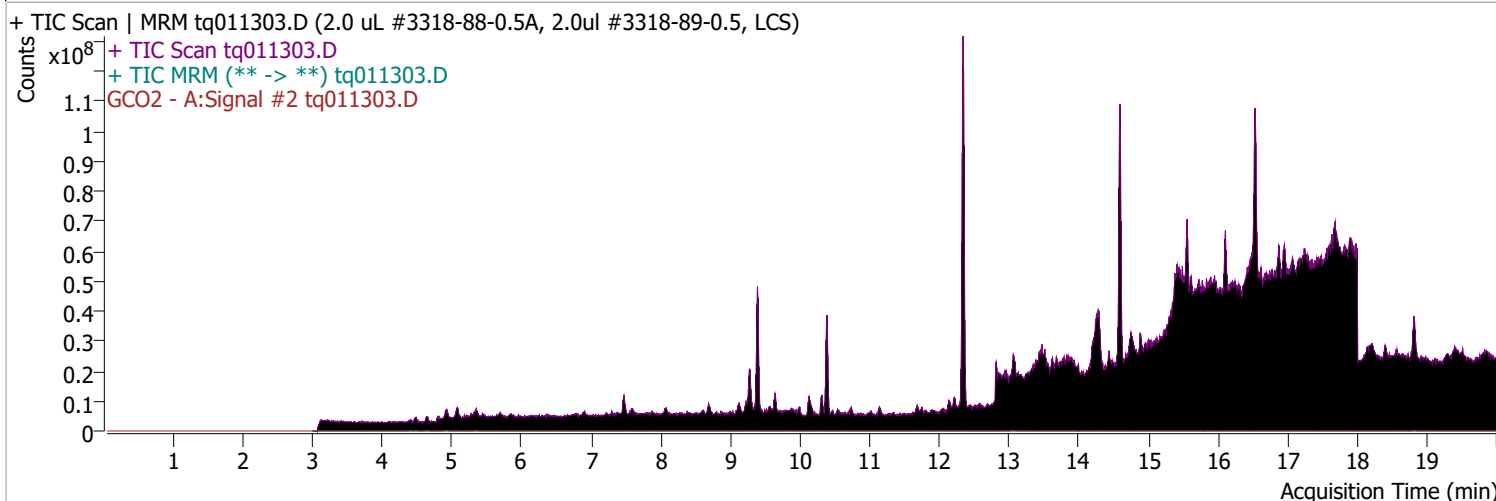
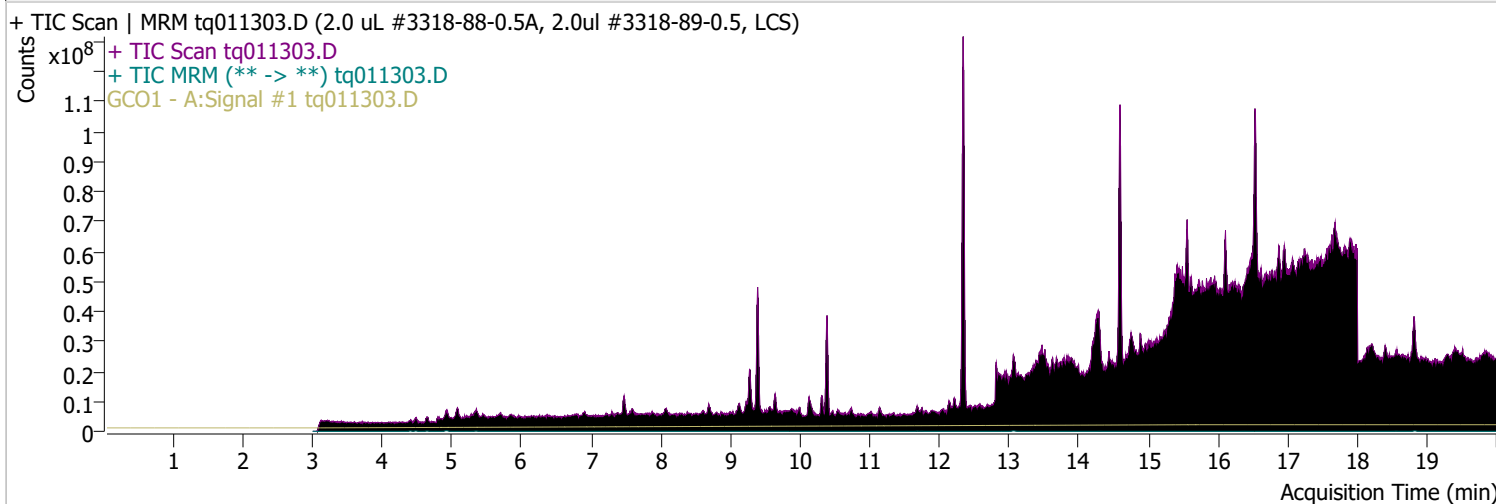
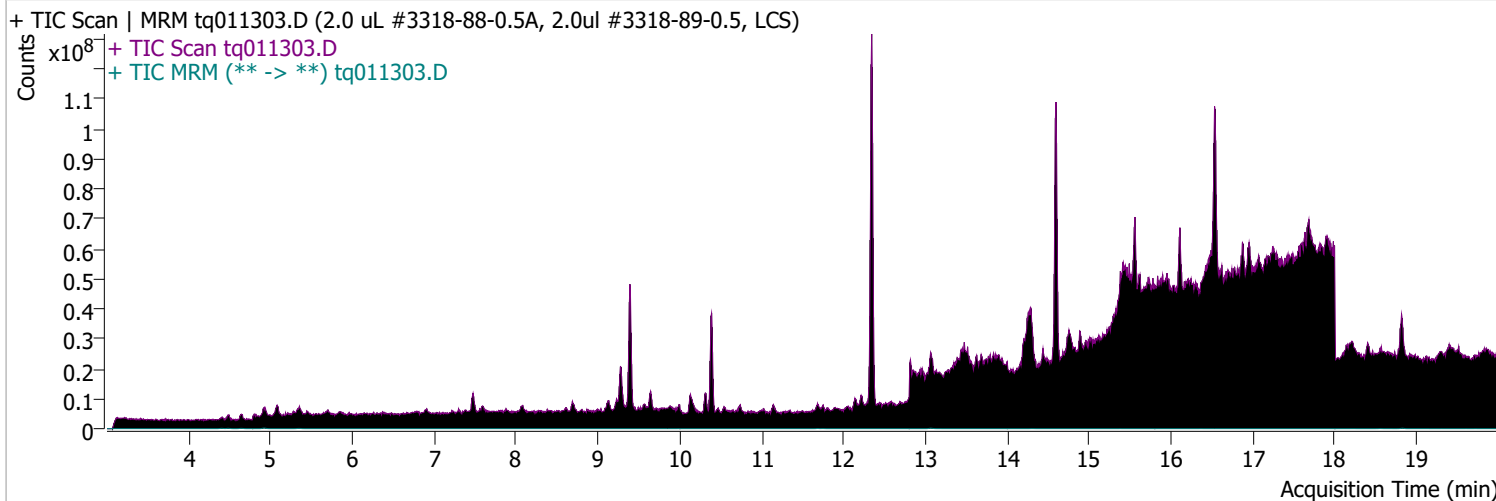
## PFOA



# Quantitative Analysis Sample Report

Batch Path	D:\MassHunter\GCMS\1\data\13jan23\QuantResults\13jan23.batch.bin		
Analysis Time	1/13/2023 12:01 PM	Analyst Name	TAI\us32_usr_ins22923
Report Time	1/18/2023 2:36:02 PM	Reporter Name	TAI\us32_usr_ins22923
Last Calib Update	1/3/2023 2:39 PM	Batch State	Processed
Quant Batch Version	10.1	Quant Report Version	10.1
Acq. Time	1/13/2023 10:05 AM	Data File	tq011303.D
Sample Type	QC	Sample Name	2.0 uL #3318-88-0.5A, 2.0ul #3318-89-0.5, LCS
Dilution	1	Acq. Method	tq22m1227

## Sample Chromatogram

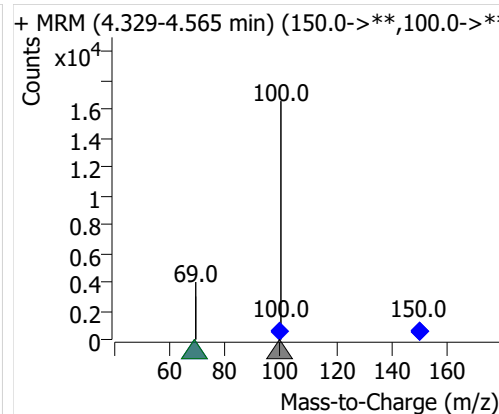
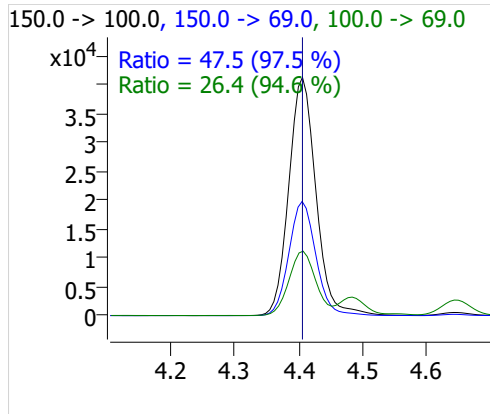
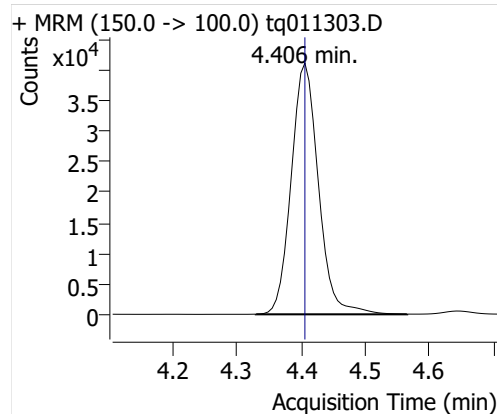


Compound	ISTD	RT	Resp.	ISTD Resp.	Resp. Ratio	Final Conc	Units
PFBA	6:2 FTOH-C13	4.406	121393	49207	2.4670	0.7362	ng

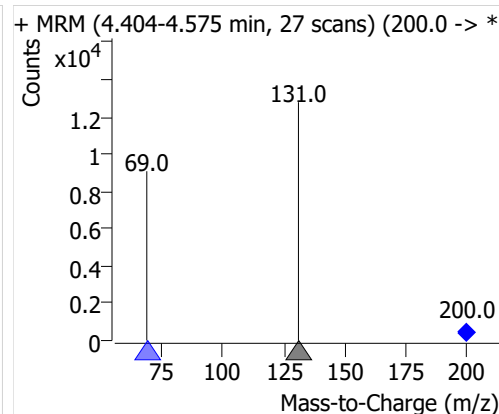
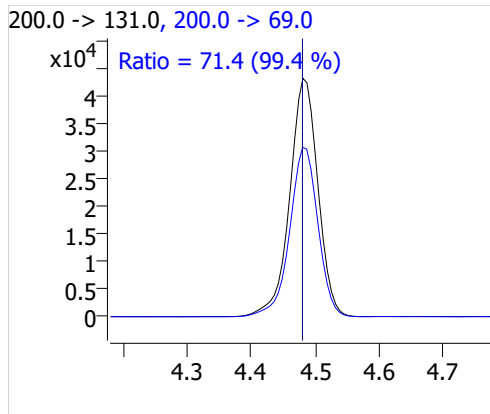
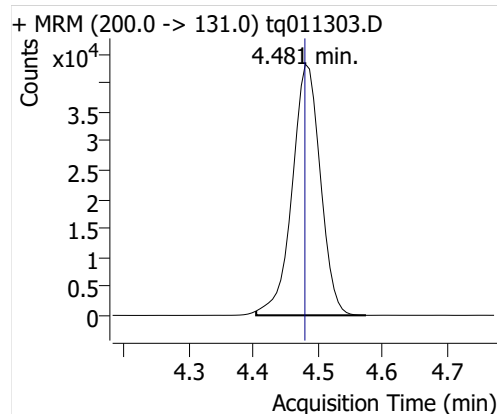
# Quantitative Analysis Sample Report

Compound	ISTD	RT	Resp.	ISTD Resp.	Resp. Ratio	Final Conc	Units
PFPeA	6:2 FTOH-C13	4.481	131560	49207	2.6736	0.8993	ng
PFHxA	6:2 FTOH-C13	4.645	65419	49207	1.3295	0.9603	ng
PFHpA	6:2 FTOH-C13	4.927	40611	49207	0.8253	0.8742	ng
PFOA	6:2 FTOH-C13	5.348	24244	49207	0.4927	0.8163	ng

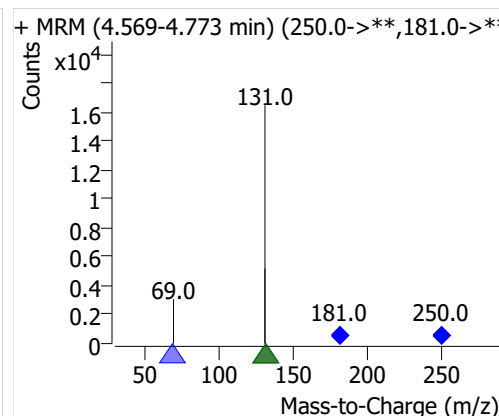
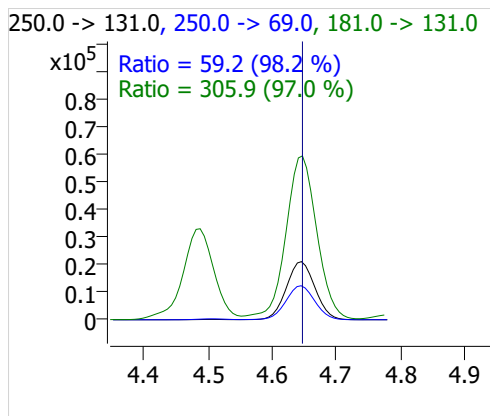
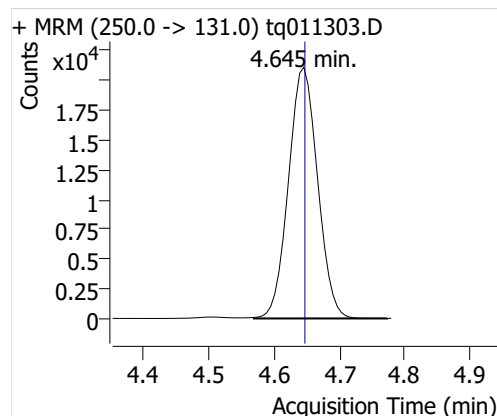
## PFBA



## PFPeA

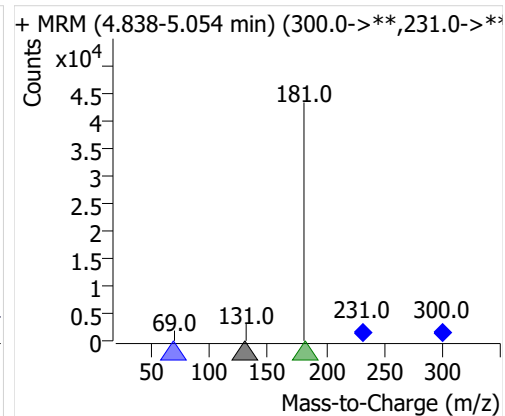
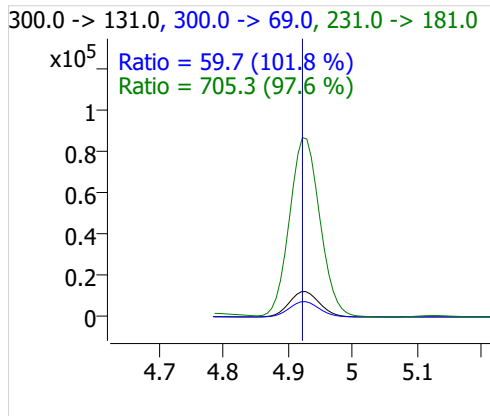
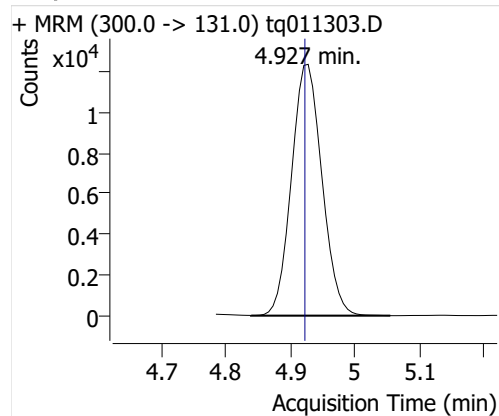


## PFHxA

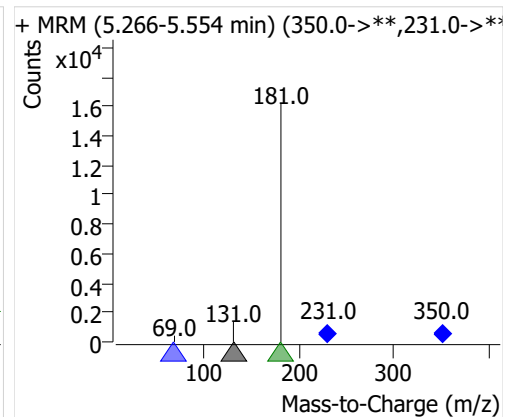
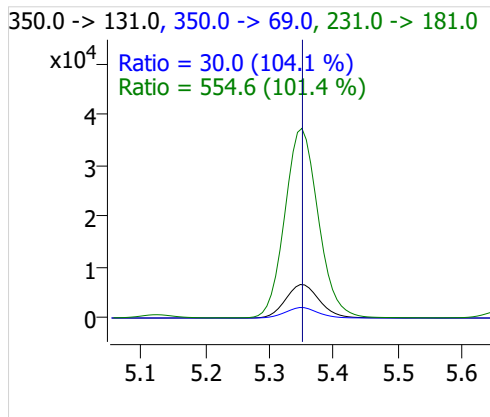
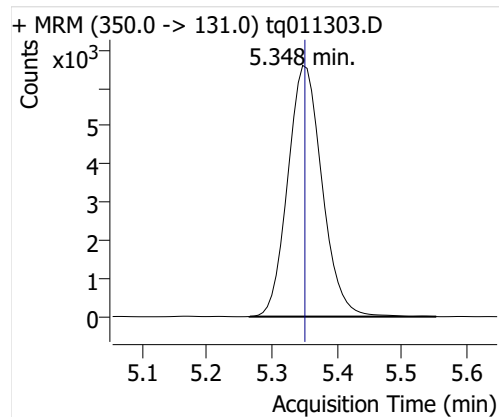




## PFHpA



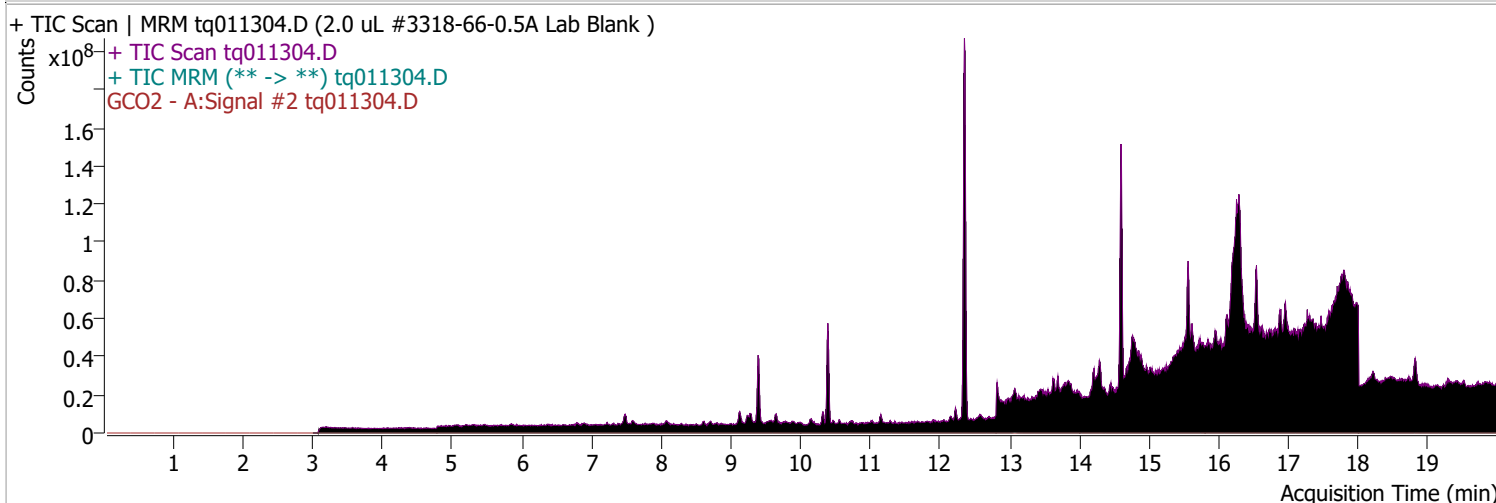
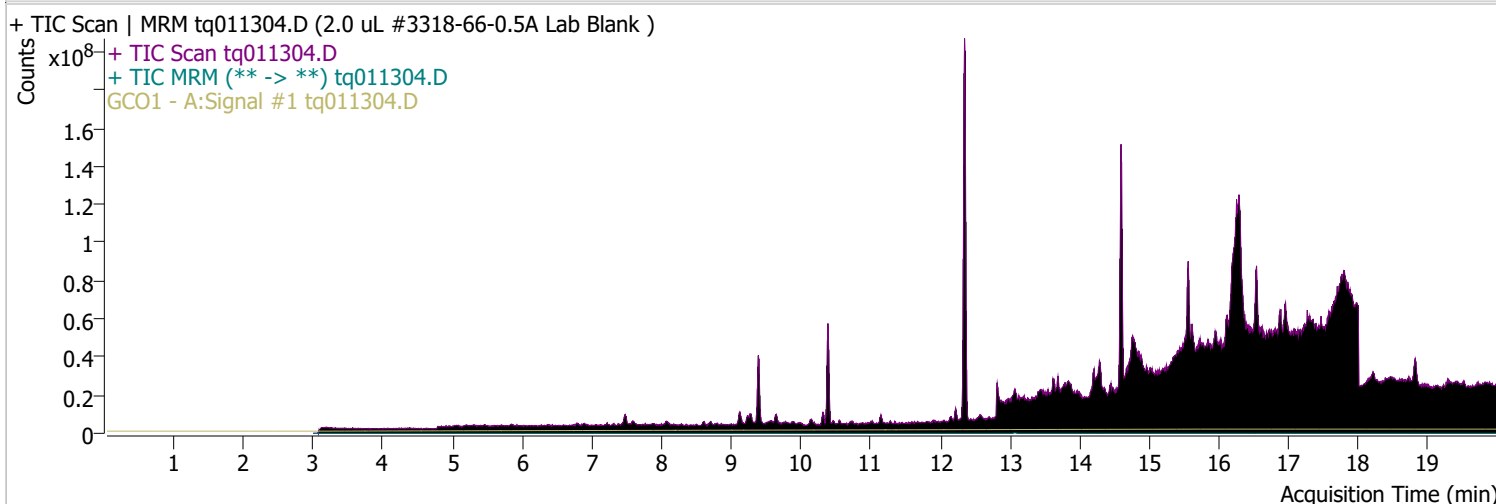
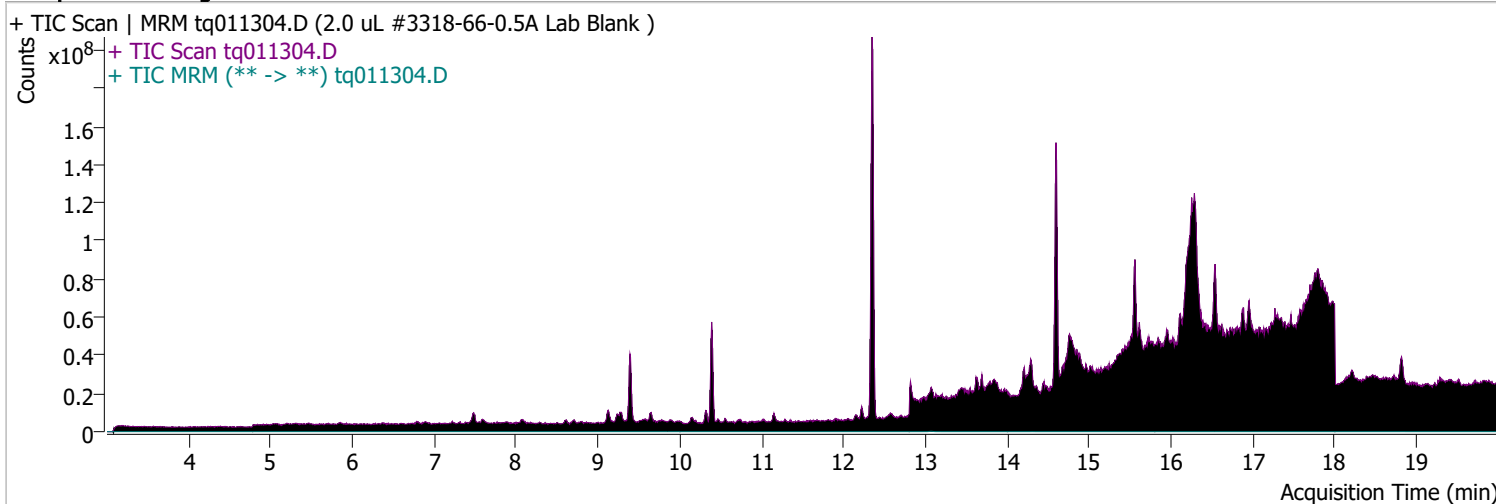
## PFOA



# Quantitative Analysis Sample Report

Batch Path	D:\MassHunter\GCMS\1\data\13jan23\QuantResults\13jan23.batch.bin		
Analysis Time	1/13/2023 12:01 PM	Analyst Name	TAI\us32_usr_ins22923
Report Time	1/18/2023 2:36:03 PM	Reporter Name	TAI\us32_usr_ins22923
Last Calib Update	1/3/2023 2:39 PM	Batch State	Processed
Quant Batch Version	10.1	Quant Report Version	10.1
Acq. Time	1/13/2023 11:11 AM	Data File	tq011304.D
Sample Type	Sample	Sample Name	2.0 uL #3318-66-0.5A Lab Blank
Dilution	1	Acq. Method	tq22m1227

## Sample Chromatogram

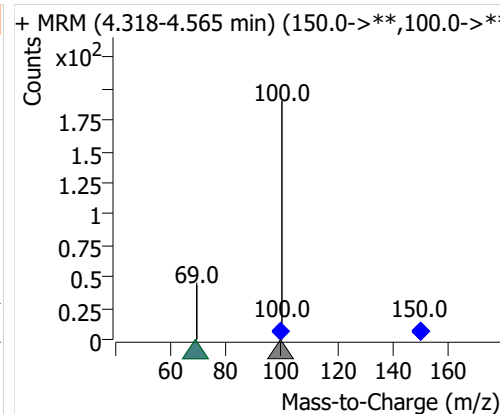
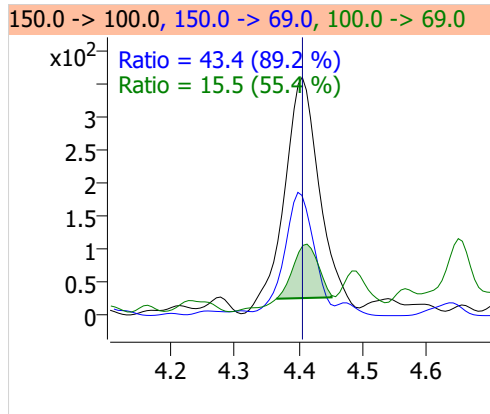
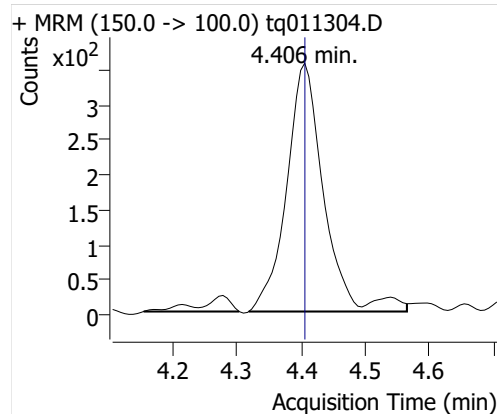


Compound	ISTD	RT	Resp.	ISTD Resp.	Resp. Ratio	Final Conc	Units
PFBA	6:2 FTOH-C13	4.406	1432	92007	0.0156	0.0046	ng

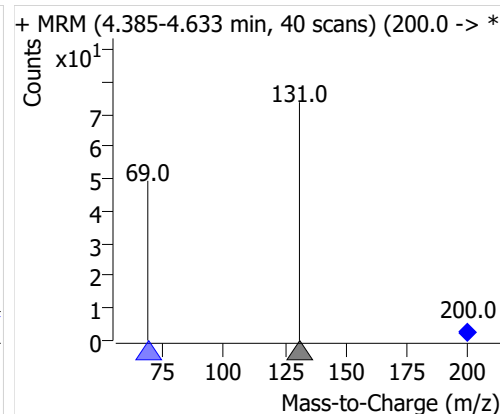
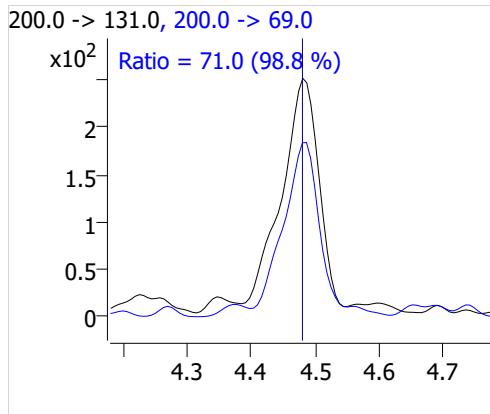
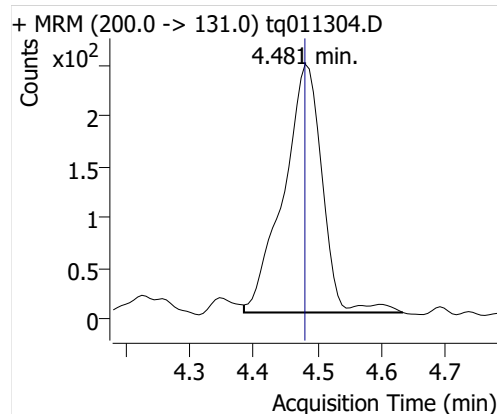
# Quantitative Analysis Sample Report

Compound	ISTD	RT	Resp.	ISTD Resp.	Resp. Ratio	Final Conc	Units
PFPeA	6:2 FTOH-C13	4.481	1030	92007	0.0112	0.0038	ng
PFHxA	6:2 FTOH-C13	4.645	1442	92007	0.0157	0.0113	ng
PFHpA	6:2 FTOH-C13	4.927	159	92007	0.0017	0.0018	ng
PFOA	6:2 FTOH-C13	5.348	869	92007	0.0094	0.0157	ng

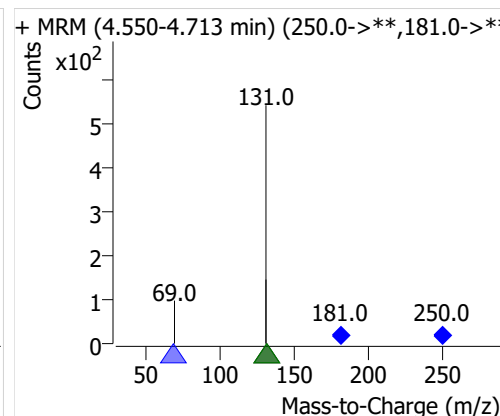
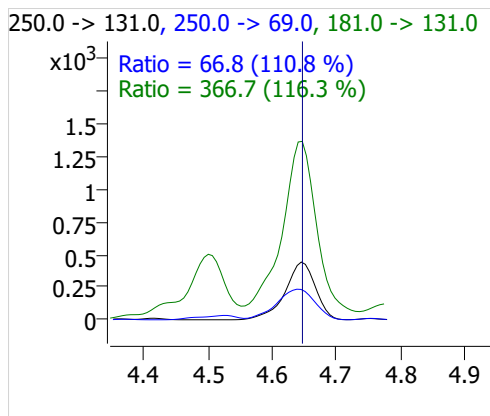
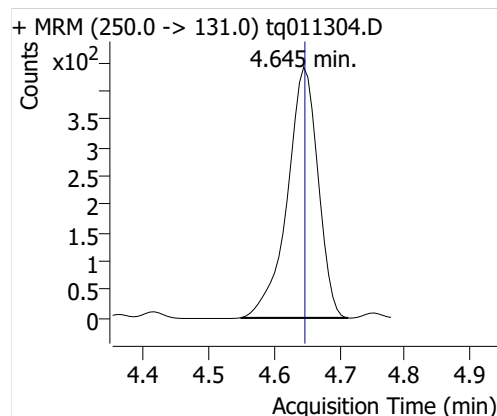
## PFBA



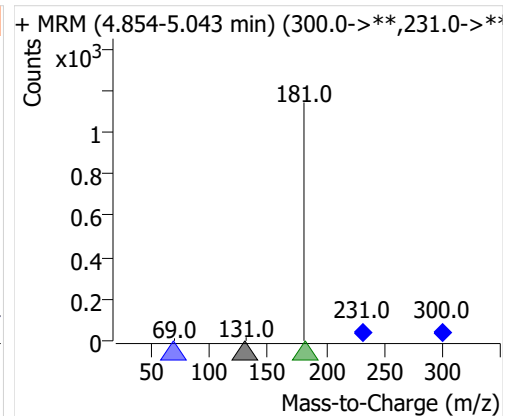
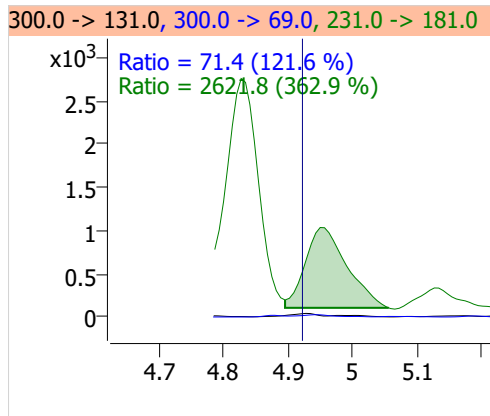
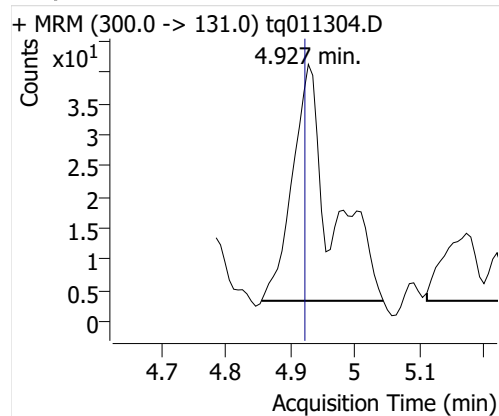
## PFPeA



## PFHxA



## PFHpA



## PFOA

